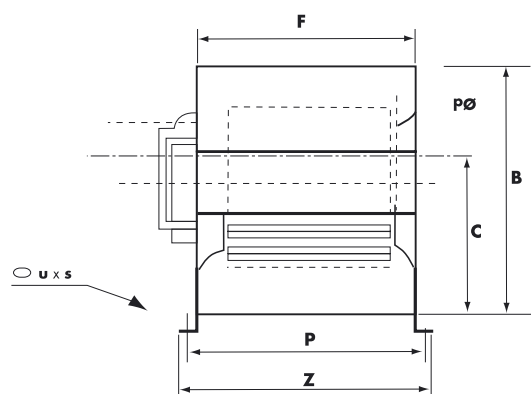


Série DD

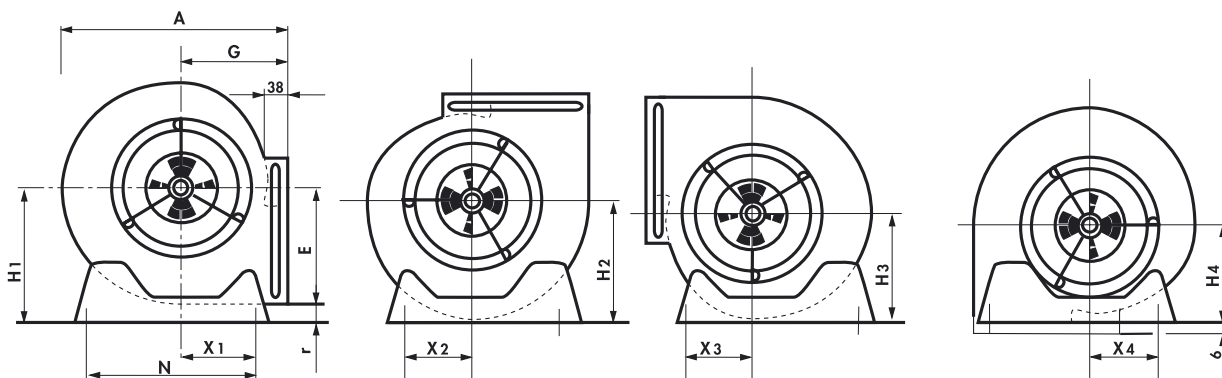
Motor directamente acoplado.

A Série DD é uma gama completa de ventiladores com motor directamente acoplado, arrefecido pelo fluxo de ar e com turbina de pás "curvadas para a frente".



Dimensões

TIPO	A	B	C	E	F	G	H1	H2	H3	H4	N	X1	X2	X3	X4	P	Z	r	u x s
DD 7-7	316	325	208	186	232	153	203	169	145	147	225	117	86	88	47	258	282	17	11 x 16
DD 9-7	380	387	262	215	232	185	253	199	177	179	300	119	124	123	120	258	282	38	11 x 16
DD 9-9	380	387	262	215	298	185	253	199	177	179	300	119	124	123	120	324	348	38	11 x 16
DD 10-8	425	443	289	249	265	203	287	227	198	197	340	136	132	135	132	291	315	38	11 x 16
DD 10-10	425	443	289	249	331	203	287	227	198	197	340	136	132	135	132	357	381	38	11 x 16
DD 12-9	491	521	341	294	309	230	332	266	232	224	408	161	153	161	153	335	359	38	11 x 16
DD 12-12	491	521	341	294	395	230	332	266	232	224	408	161	153	161	153	421	445	38	11 x 16



Modelo	stock	Curva	Caixa Tipo	Motor Cv	Tensão V	Rpm	m3/h máx.	P.Est. min.	Temp. máx.	Amp. máx.	Reg. Veloc.(A)	Cond. mF	IP	Cl. Isol.	Kg
--------	-------	-------	---------------	-------------	-------------	-----	--------------	----------------	---------------	--------------	-------------------	-------------	----	--------------	----

Modelos 6 pólos (900 rpm)

DD7-7 73W 6P CE	*	1	VB1DD	1/10	220	900	1300	0	50	0.7	3	4	31	B	6.9
DD9-7 147W 6P CE		2	VB2DD	1/6	220	860	1850	10	40	1.5	3	5	31	B	10.7
DD9-7 245W 6P CE		3	VB2DD	1/3	220	850	2600	5	40	2.1	6	8	32	B	11.9
DD9-9 147W 6P CE		4	VB3DD	1/6	220	860	1950	8	40	1.7	3	5	31	B	11.6
DD9-9 245W 6P CE	*	5	VB3DD	1/3	220	850	2750	10	40	2.1	6	8	32	B	12.8
DD10-8 245W 6P CE		6	VB4DD	1/3	220	850	3250	9	40	2.6	6	8	32	B	13.4
DD10-10 245W 6P CE	*	7	VB5DD	1/3	220	850	3550	9	40	2.6	6	8	32	B	14.6
DD12-9 495W 6P CE		8	VB6DD	3/4	220	850	3850	16	40	4.5	12	16	54	B	23.7
DD12-9 736W 6P CE	*	9	VB6DD	1	220	925	4750	28	40	6	12	20	44	B	25.3
DD12-9 1380W 6P CE	*	10	VB6DD	1,5	380	900	6000	17	40	3.9			54	B	25.1
DD12-12 495W 6P CE		11	VB7DD	3/4	220	850	4100	16	40	4.4	12	16	54	B	25.5
DD12-12 736W 6P CE	*	12	VB7DD	1	220	925	4875	27	40	6.2	12	20	44	B	26.9
DD12-12 1380W 6P CE	*	13	VB7DD	1,5	380	900	6350	20	40	3.9			54	B	26.7

Modelos 4 pólos (1400 rpm)

DD7-7 147W 4P CE	*	14	VB1DD	1/5	220	1300	1550	13	40	1.65	3	6.3	31	F	6.9
DD9-7 373W 4P CE		15	VB2DD	1/2	220	1380	2650	24	40	4	6	10	31	F	12.9
DD9-9 373W 4P CE		16	VB3DD	1/2	220	1380	2900	24	40	4	6	10	31	F	13.8
DD9-9 600W 4P CE	*	17	VB3DD	3/4	220	1250	2900	24	40	4.1	12	16	54	F	14.5
DD10-8 373W 4P CE		18	VB4DD	1/2	220	1380	2600	39	40	4.1	6	12.6	31	F	14.4
DD10-8 600W 4P CE		19	VB4DD	3/4	220	1250	3650	38	40	4.7	12	16	54	F	15.1
DD10-10 373W 4P CE		20	VB5DD	1/2	220	1380	2600	36	40	4	6	12.5	31	F	15.5
DD10-10 600W 4P CE	*	21	VB5DD	3/4	220	1250	3700	25	40	4.7	12	16	54	F	16.3

Modelos 3 Velocidades (1400 rpm)

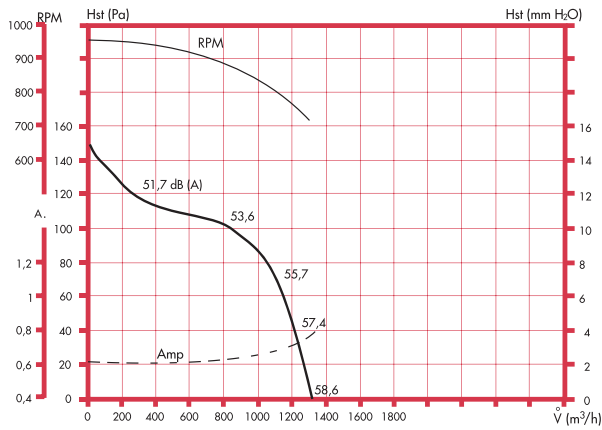
DD7-7 147W 6P 3V CE		22	VB1DD	1/5	220	860	1600	0	60	1.3		5	31	B	7.1
DD9-7 245W 6P 3V		23	VB2DD	1/3	220	800	2650	0	40	2.85		8	20	F	12.4
DD9-9 245W 6P 3V		24	VB3DD	1/3	220	800	3100	0	40	3.1		8	20	F	13.3
DD10-10 245W 6P 3V		25	VB5DD	1/3	220	800	2600	6	40	3		8	20	F	15.1
DD12-12 736W 6P 3V		26	VB7DD	1	220	930	5500	21	40	7.1		20	20	F	27.4

* Modelos normalmente em stock

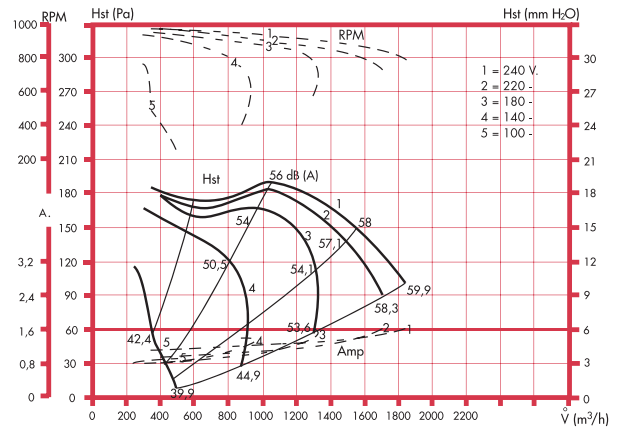
* CE - Motor fechado

Curvas características

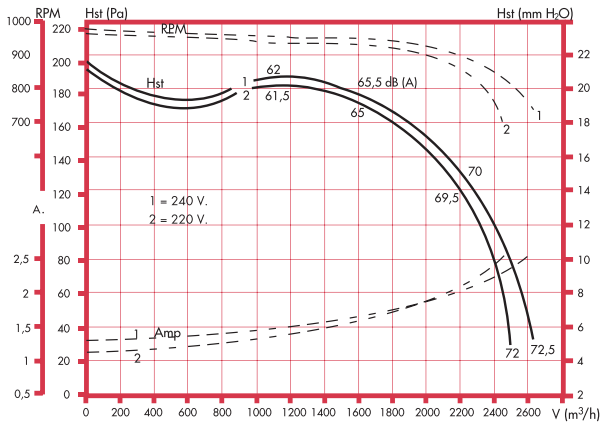
DD 7/7 73 W 6P CE



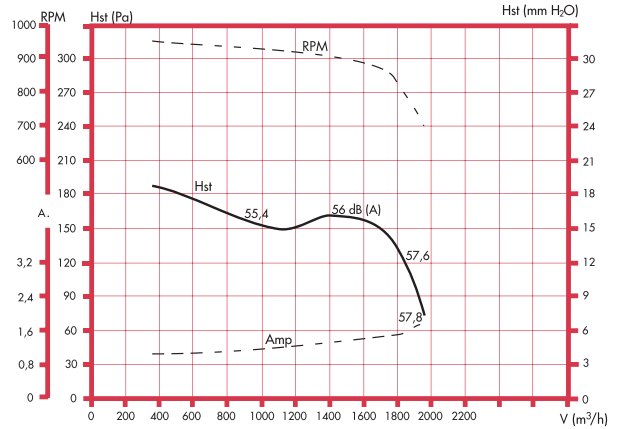
DD 9/7 147 W 6P CE



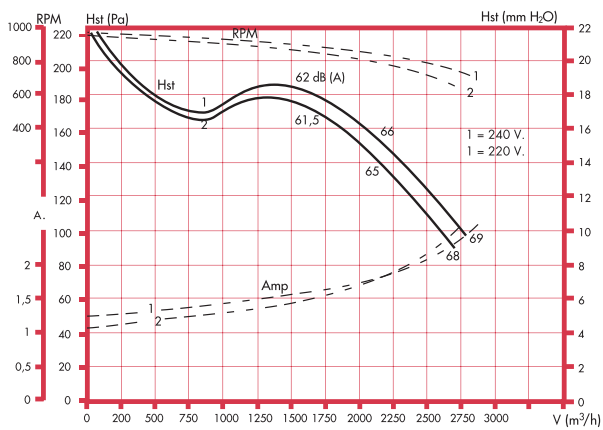
DD 9/7 245 W 6P CE



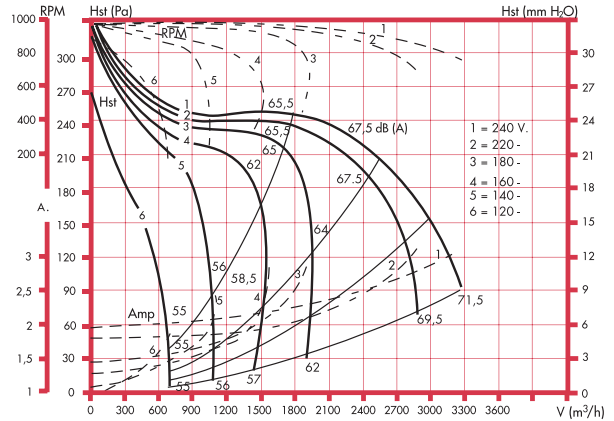
DD 9/9 147 W 6P CE



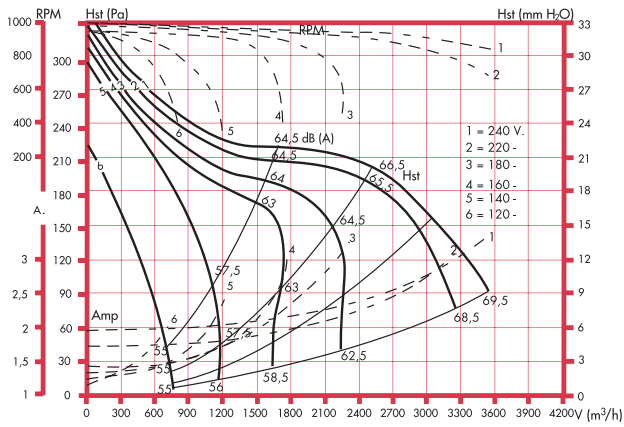
DD 9/9 245 W 6P CE



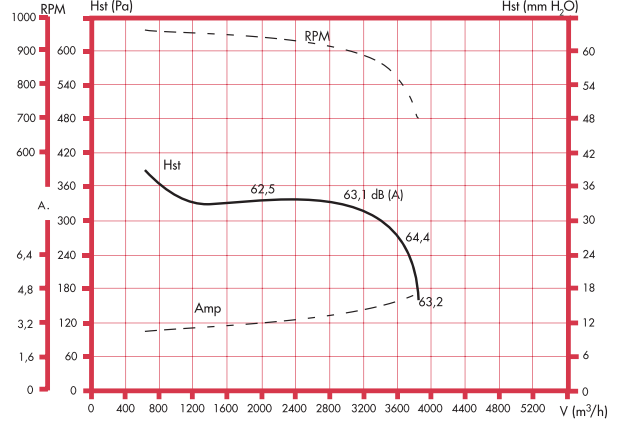
DD 10/8 245 W 6P CE



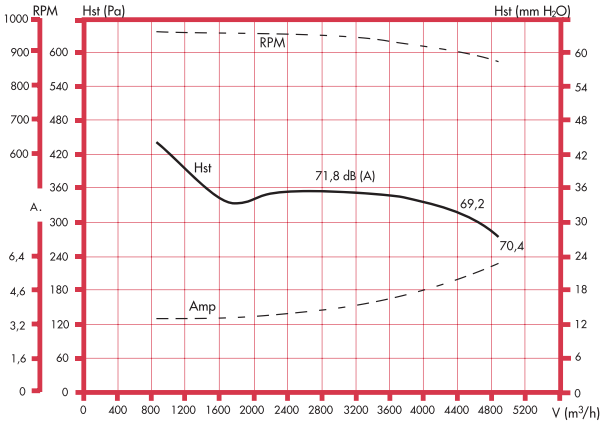
DD 10/10 245 W 6P CE



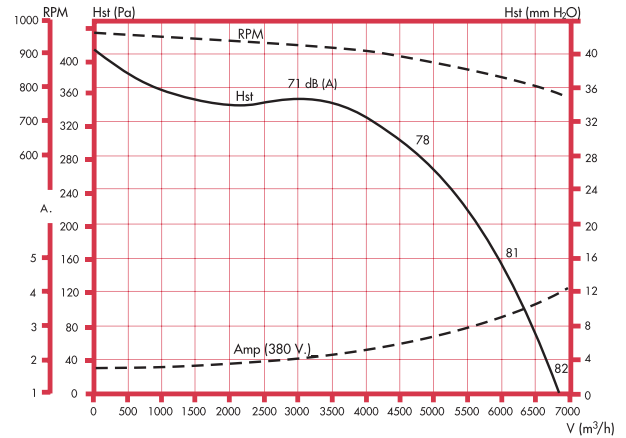
DD 12/9 495 W 6P CE



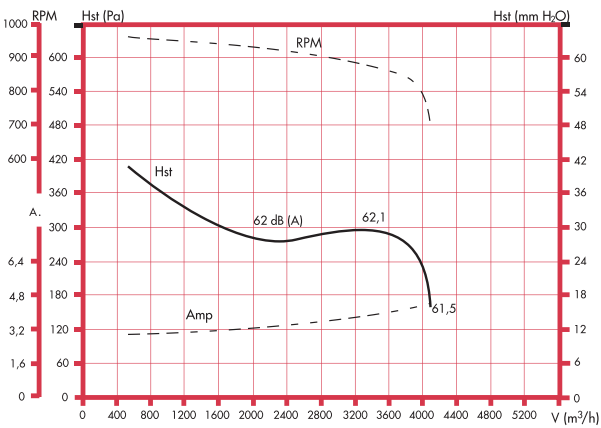
DD 12/9 736 W 6P CE



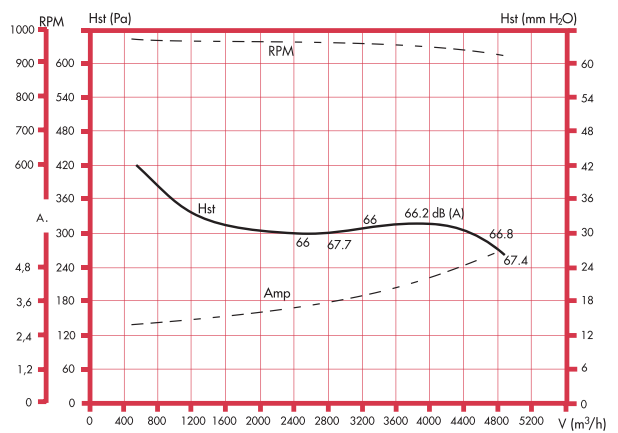
DD 12/9 1380 W 6P TRIF



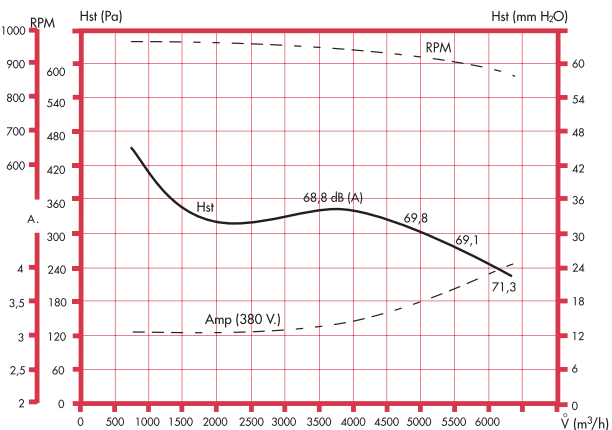
DD 12/12 495 W 6P CE



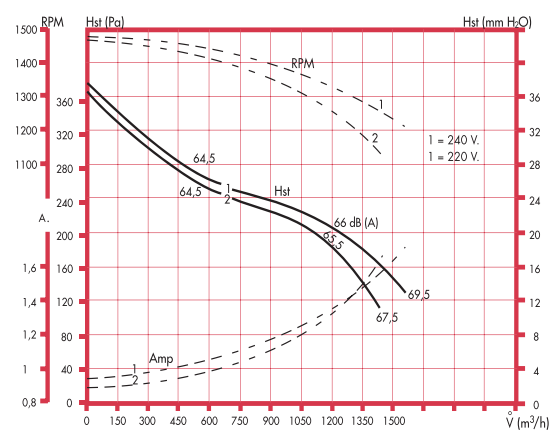
DD 12/12 736 W 6P CE



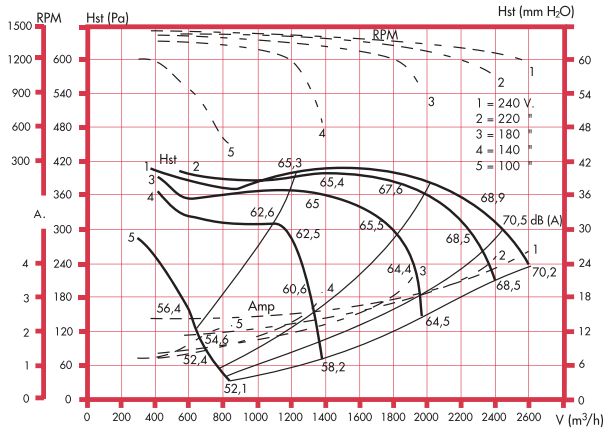
DD 12/12 1380 W 6P TRIF CE



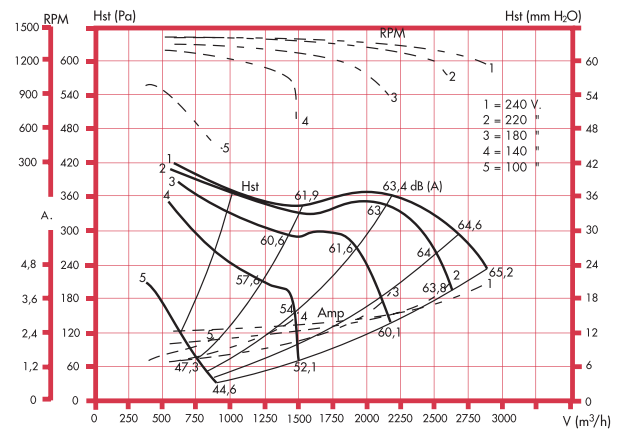
DD 7/7 147 W 4P CE



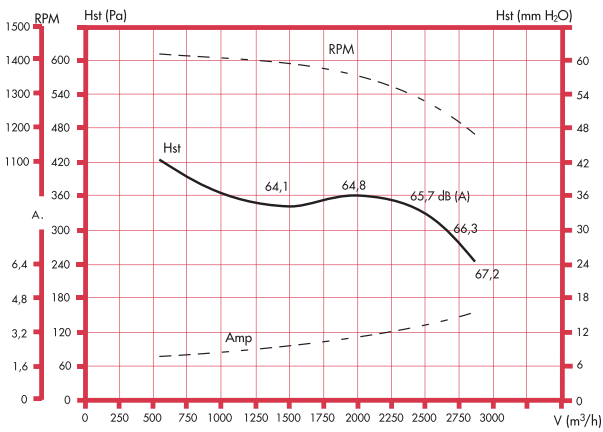
DD 9/7 373 W 4P CE



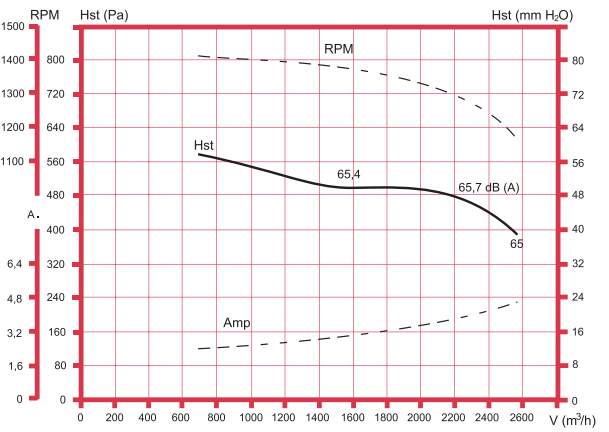
DD 9/9 373 W 4P CE



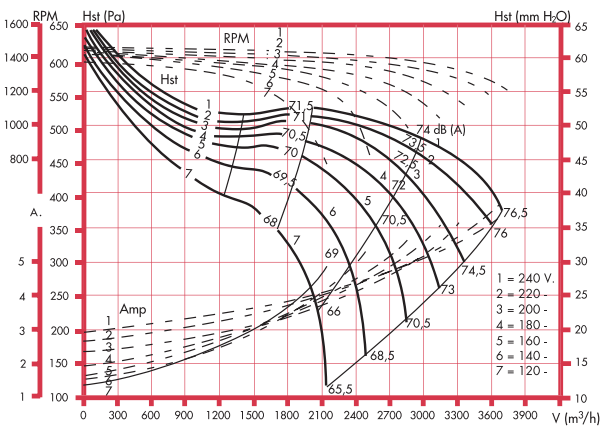
DD 9/9 600 W 4P CE



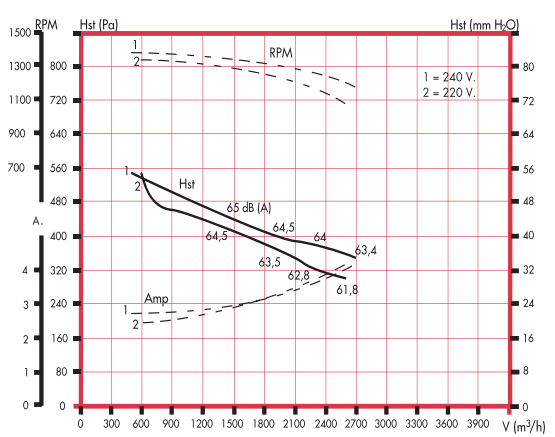
DD 10/8 373 W 4P CE



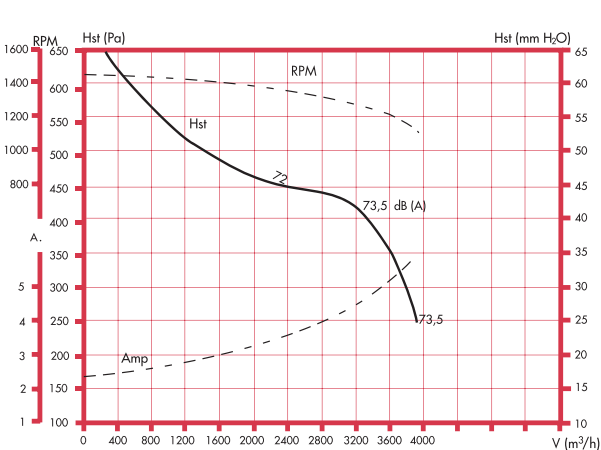
DD 10/8 600 W 4P CE



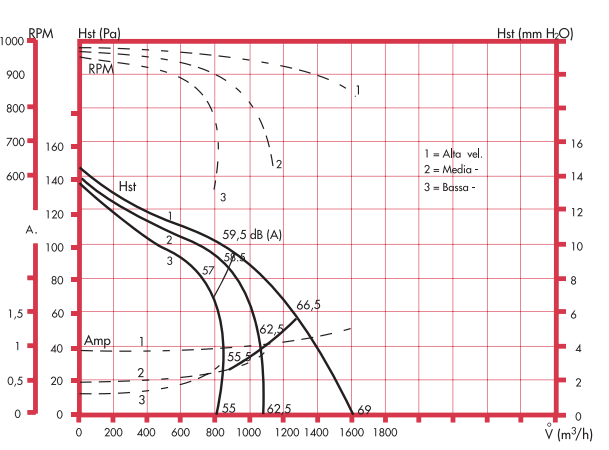
DD 10/10 373 W 4P CE



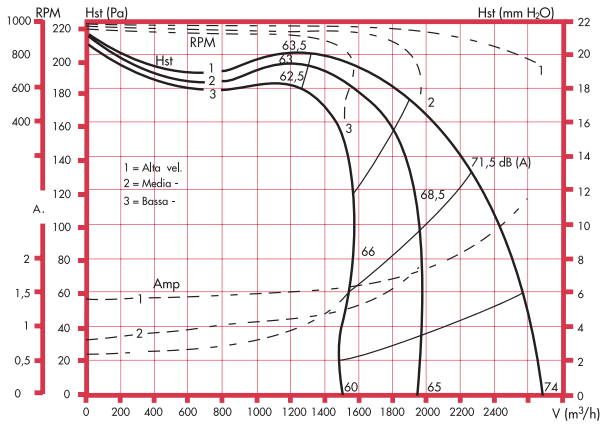
DD 10/10 600 W 4P CE



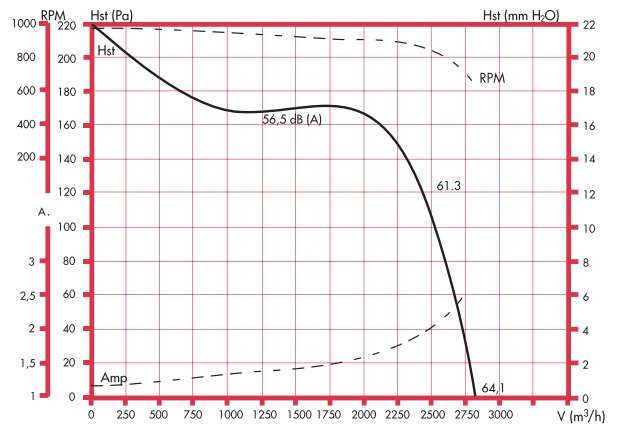
DD 7/7 147 W 6P 3V CE



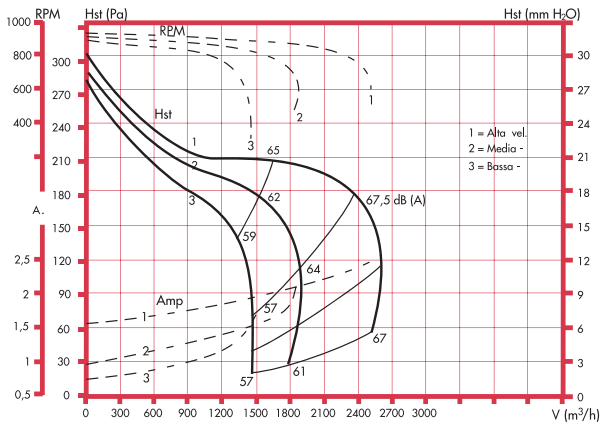
DD 9/7 245 W 6P 3V



DD 9/9 245 W 6P



DD 10/10 245 W 6P 3V



DD 12/12 736 W 6P 3V

